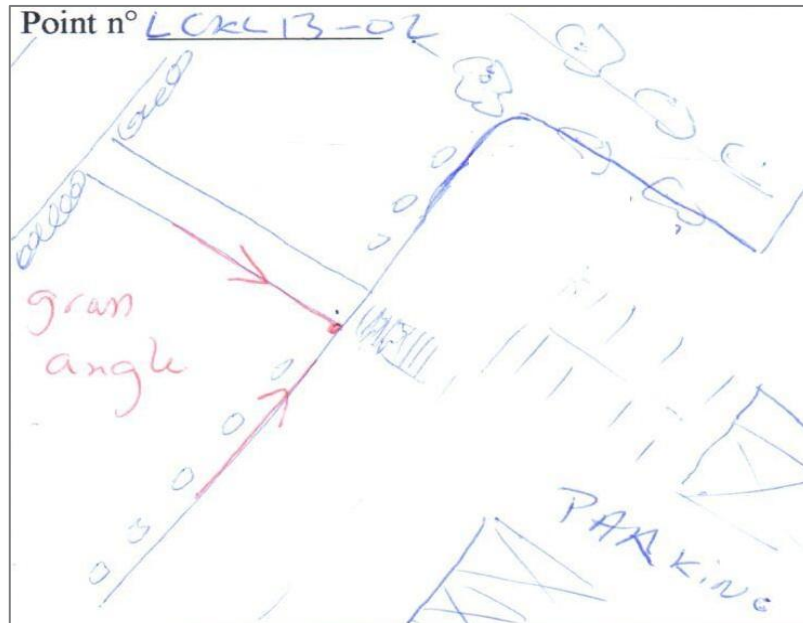


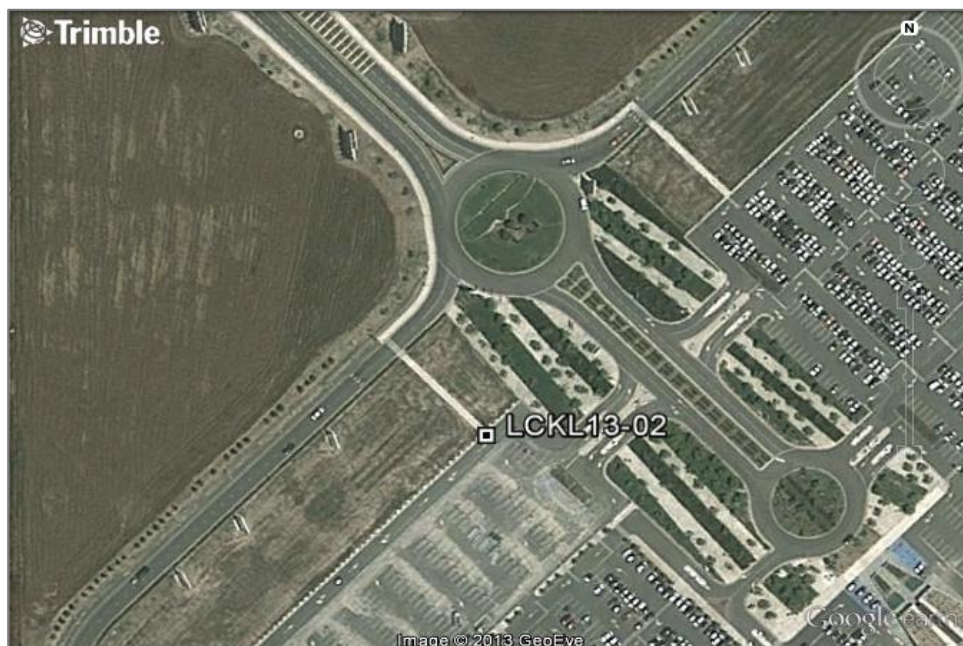
LARNACA		IATA : LCA	ICAO : LCKL
Country:	Cyprus	Survey date:	19-Feb-13
DATUM	ETRF2000	Ellipsoid	IAG-GRS80
Epoch	2008.00	Geoid	EGM08
Projection	UTM-36NORTH	Geoid Undulation (m)	25.030
Projected coordinates		Geographical coordinates	
Est (m)	555 334.308	Latitude	34°52'20.92705" N
Nord (m)	3 859 068.863	Longitude	33°36'19.62233" E
Elevation - MSL (m)	12.064	Ellipsoïde Height - HAE (m)	37.094
Horizontal Accuracy (m)	0.06	Vertical Accuracy (m)	0.05

NB: the accuracy refer to the GNSS computation; The physical definition of the GCP may be less accurate

Scheme



Situation



Country: Cyprus

LARNACA

IATA : LCA

ICAO : LCKL

Survey date: 19-Feb-13



TopoSat® , 99Bis Avenue du Général Leclerc, 75014 PARIS (France)

E-mail toposat@toposat.fr, Web www.toposat.fr

Relevés et positionnements GPS - Ingénierie topographique - Conseil - Formation